

Model LR Series



Vent rupture & OSD/CID operating tester

DESCRIPTION

Vent, OSD, and CID are parts that play key safety functions of secondary batteries. NEOSENS INSTRUMENT supplies reliable testers to battery manufacturers and parts suppliers based on a wide variety of accumulated experience and know-how for parts reliability testers that are responsible for the key safety functions of circular and prismatic batteries.

FEATURES

- ✓ Circular / Square battery.
- ✓ Vent rupture pressure detecting [Cap Assy / CAN]
- ✓ OSD / CID Operating pressure detecting
- ✓ 1Ch / 2Ch / 3Ch
- ✓ Leak test can be applied
- ✓ PC Based control & DAQ
- ✓ CE,UL available



* Available

Model LR Series

LR Series

Model Name	Test Channel	Battery type	Capacity [Kgf/Cm ²]	Test Speed [(Kgf/Cm ²)/Sec]	Test gas		Leak Test	
					Air	N2	Vent	Terminal
LR-1000	1	Square	~35	0.05~2	X	O	O	(O)
LR-2000	2	Square	~35	0.05~2	X	O	O	X
LR-3000	3	Square	~35	0.05~2	X	O	O	X
CR-1000	1	Circular	~35	0.05~2	X	O	O	X
CR-2000	2	Circular	~35	0.05~2	X	O	O	X
CR-3000	3	Circular	~35	0.05~2	X	O	O	X

Note

- 1) The test speed can be changed in the program, and it is saved and managed exclusively for each model.
- 2) The leak test function of the terminal part of medium and large prismatic batteries is available only in the LR-1000, and in this case, the LR-1000 is composed of two independent test parts.
- 3) Test gas uses N2, and N2 bombe is not provided.

LR Series

Model Name	Accuracy	
	Pressure [%FS]	
LR-1000	±<0.15	
LR-2000	±<0.15	
LR-3000	±<0.15	
CR-1000	±<0.15	
CR-2000	±<0.15	
CR-3000	±<0.15	

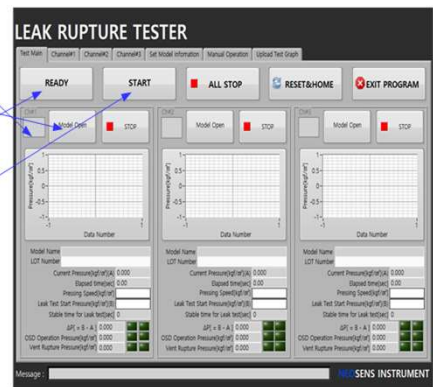
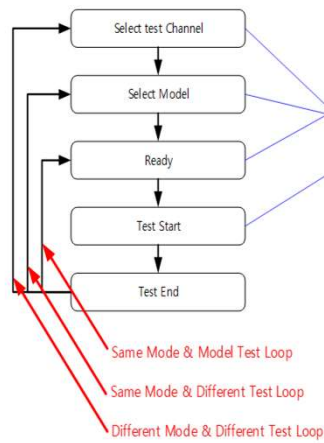
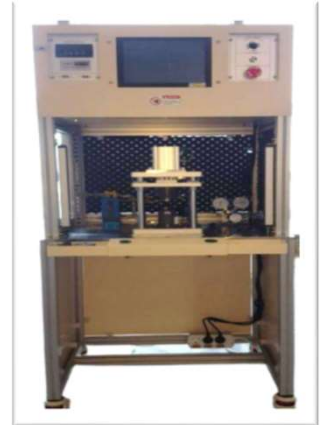
LR Series

Model Name	Power source			N2 gas	
	AC220 1Φ	AC220 3Φ	AC380 3Φ	Gas regulator	Gas bombe
LR-1000	O	X	X	O	X
LR-2000	O	X	X	O	X
LR-3000	O	X	X	O	X
CR-1000	O	X	X	O	X
CR-2000	O	X	X	O	X
CR-3000	O	X	X	O	X



* Available

Model LR Series



Model LR Series

NOTES

1. All equipment can be manufactured after specification discussion and confirmation with the customer.
2. The type and specification of the tool to be used for the test should be decided after consultation before submitting the quotation.
3. For specifications that are changed or added after the contract, depending on the scope, it may be paid or free of charge.
4. As it is a facility manufactured exclusively for each customer, CE and UL certification can be carried out individually.
5. The contents of this specification are subject to change without notice, check and confirmation of specifications must be conducted after consultation with the responsible salesperson.

Warranty. NEOSENS INSTRUMENT warrants goods of its manufacture as being free of defective materials and faulty workmanship.

NEOSENS INSTRUMENT's standard product warranty applies unless agreed to otherwise by NEOSENS INSTRUMENT in writing; please refer to your order acknowledgement.

For more information visit our website.

www.neosens-ins.com or call +82-31-8014-2500

Email inquiries to info.neosens-ys@neosens.co.kr

WARNING

PERSONAL INJURY

- DO NOT USE Do not use this product for any purpose other than the secondary battery crush test.

Failure to comply with these instructions could result in death or serious injury.

WARNING

MISUSE OF DOCUMENTATION

- The information presented in this catalogue is for reference only. DO NOT USE this document as product installation information.
- Complete installation, operation and maintenance information is provided in the instructions supplied with each product.

Failure to comply with these instructions could result in death or serious injury.

Sensing & Automation Control Solutions
NEOSENS INSTRUMENT

63-12, Dongtancheomdansaneop 1-ro,
Hwaseong-si, Gyeonggi-do, Republic of
Korea, 18469 (+82-8014-2500)
www.neosens-ins.com

Copyright © 2014 NEOSENS INSTRUMENT All rights reserved.

NEOSENS
INSTRUMENT