

Model TT Series

(Battery) Part Torque Tester



DESCRIPTION

It is a test machine that can perform a torque test on the part produced by riveting or welding terminal parts in the production of Caplate Assembly Manufacturing Process, which is a core part of a rectangular secondary battery. NEOSENS INSTRUMENT has been providing customers with various solutions for torque test of secondary battery parts.

FEATURES

- ✓ Caplate assembly torque test
- ✓ Terminal assembly / Terminal sub parts
- ✓ PC Based control & DAQ
- ✓ CE,UL available



* Available

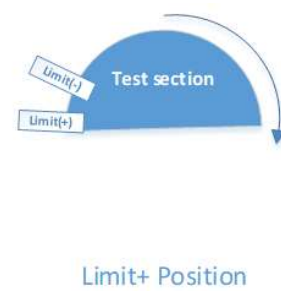
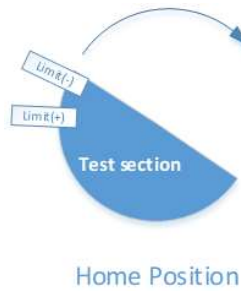
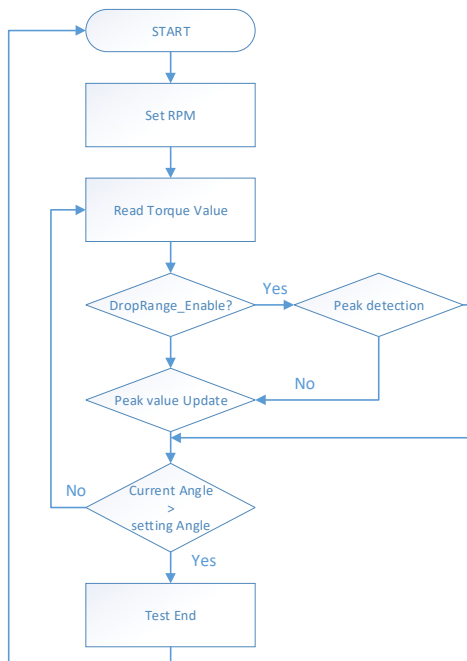
Model TT Series

TT Series

Model Name	Test Channel	Battery type	Maximum Capacity [N*M]	Torque Test parts		
				Assembly	Sub Assembly	Parts
TT-1000	1	Square	40N*M	0	0	0

Note

- 1) Mounting/detaching and initial setting of the sample must be done manually.
- 2) A jig for upper and lower parts is required for each model or sample.
- 3) The test angle is up to 180 degrees.
- 4) The height adjuster for test setting is operated manually.



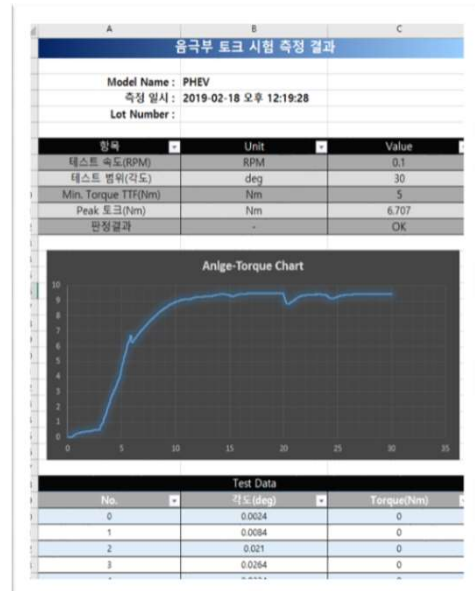
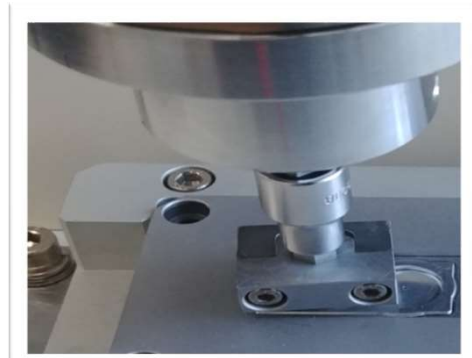
TT Series

Model Name	Power source		
	AC220 1Φ	AC220 3Φ	AC380 3Φ
TT-1000	0	X	X



* Available

Model TT Series



Model TT Series

NOTES

1. All equipment can be manufactured after specification discussion and confirmation with the customer.
2. The type and specification of the tool to be used for the test should be decided after consultation before submitting the quotation.
3. For specifications that are changed or added after the contract, depending on the scope, it may be paid or free of charge.
4. As it is a facility manufactured exclusively for each customer, CE and UL certification can be carried out individually.
5. The contents of this specification are subject to change without notice, check and confirmation of specifications must be conducted after consultation with the responsible salesperson.

Warranty. NEOSENS INSTRUMENT warrants goods of its manufacture as being free of defective materials and faulty workmanship.

NEOSENS INSTRUMENT's standard product warranty applies unless agreed to otherwise by NEOSENS INSTRUMENT in writing; please refer to your order acknowledgement.

For more information visit our website.

www.neosens-ins.com or call +82-31-8014-2500

Email inquiries to info.neosens-ys@neosens.co.kr

WARNING

PERSONAL INJURY

- DO NOT USE Do not use this product for any purpose other than the secondary battery crush test.

Failure to comply with these instructions could result in death or serious injury.

WARNING

MISUSE OF DOCUMENTATION

- The information presented in this catalogue is for reference only. DO NOT USE this document as product installation information.
- Complete installation, operation and maintenance information is provided in the instructions supplied with each product.

Failure to comply with these instructions could result in death or serious injury.

Sensing & Automation Control Solutions
NEOSENS INSTRUMENT

63-12, Dongtancheomdansaneop 1-ro,
Hwaseong-si, Gyeonggi-do, Republic of
Korea, 18469 (+82-8014-2500)
www.neosens-ins.com

Copyright © 2014 NEOSENS INSTRUMENT All rights reserved.

NEOSENS
INSTRUMENT